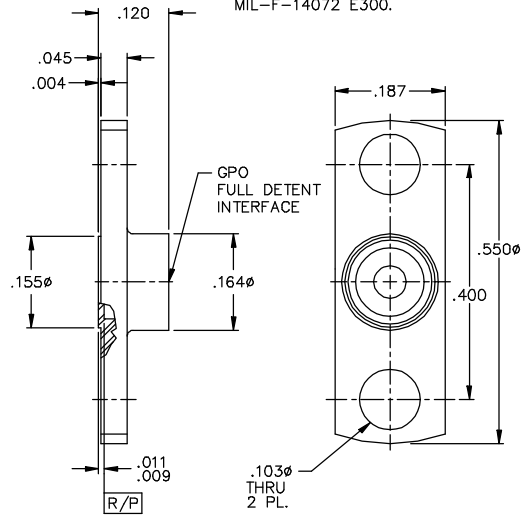


REV.	DESCRIPTION	DATE	BY
D	SEE ECO GM-11280	2/17/00	MJC

MATERIAL AND FINISH

SHROUD: CRES 303 PER ASTM A 484
AND ASTM A 582 OR ASTM A 555
AND ASTM A 581, PASSIVATE PER
MIL-F-14072 E300.



<small>This drawing and any data contained therein is the property of Gilbert Engineering Co., Inc. and constitutes and contains proprietary and confidential information. Neither receipt nor possession of this drawing confers or transfers any right to duplicate, use or disclose any information contained herein except as expressly authorized by Gilbert Engineering Co., Inc.</small>	ALL DIMENSIONS IN INCHES	CATALOG NUMBER	CODE IDENT NO.
		0119-805-3	82316
	DRAWN:	GILBERT ENGINEERING CO., INC.	
	JRM	TITLE	
DATE	2/6/98		OUTLINE DRAWING FOR GPO FULL DETENT 2 HOLE FLANGE MOUNT SHROUD
ASSEMBLY PROCEDURES: NONE		DWG. NO.	REV
SOURCE FILE: MEOR# 1378	SHT. 1 OF 1	OL-0119-805-3	D